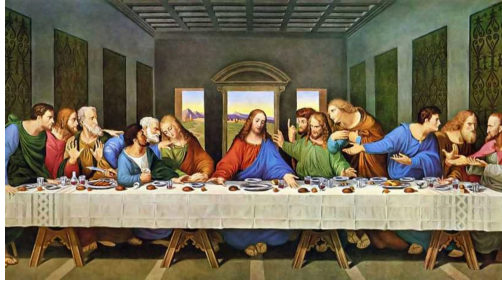


## Significant places and people



The Last Supper



Garden of Gethsemane



## KS2- Easter

### Vocabulary

Crucifixion	When somebody is nailed to a cross.
Incarnation	When somebody embodied a spirit.
Cross	The shape of the wood that Jesus was nailed to when he was crucified on Good Friday.
Disciples	Jesus' 12 special friends.
Judas	Disciple who led guards to Jesus and caused his arrest.
Peter	Disciple who denied knowing Jesus 3 times.
Pilate	Convicted Jesus of treason and had Jesus crucified.
Garden of Gethsemane	Place where Jesus was arrested.
Fish symbol	A symbol that represents the phrase of "Jesus Christ God's Son is Saviour".

## What I need to know:

- Palm Sunday is the day Jesus arrived in Jerusalem.
- Shrove Tuesday is what we call Pancake Day.
- Ash Wednesday is the first day of lent.
- Lent is when Christians are quiet and thoughtful, preparing themselves for Easter. They pray a lot, give money to charities and give up some of the things they might otherwise do for pleasure.
- Maundy Thursday is the day the Last Supper took place.
- Good Friday is the day Jesus was crucified.
- Easter Sunday is the day Jesus rose from the dead.
- The last supper was the last meal Jesus was going to share with his disciples.
- Bread symbolises the body of Jesus.
- Wine symbolises the blood of Jesus.
- Jesus' death gave people forgiveness for their sin. This shows Christians that they can do their best to forgive other people.
- Jesus' death was part of God's plan to show people they can be forgiven and start afresh.
- Christian's believe that Jesus was the Incarnation of God sent to Earth to show people how to lead good lives.
- People wear a cross necklace to represent Jesus' death and resurrection.
- Easter eggs symbolise new life after Jesus' resurrection.
- Christian charities are doing good work to alleviate poverty across the world.

