



## Year 4

# Samba and Carnival

### Key Vocabulary

	<b>Syncopation</b>	Playing on the offbeat.
	<b>Bateria</b>	A group of musicians playing Samba music.
	<b>ffBeat</b>	Offbeat
	<b>Carnival</b>	To play on the weaker beats.
	<b>Carnival</b>	A celebration of Brazilian food, music and culture.
	<b>Unison</b>	To do the same thing at the same time.
	<b>Composition</b>	Creating your own piece of music.

✧ There is a leader with a whistle.



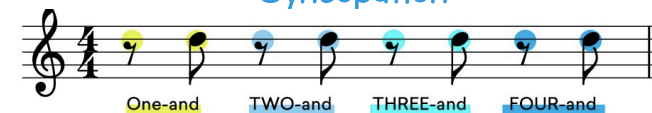
Skills I can show:	What I need to know:
<input type="checkbox"/> I can identify the main features of Samba music.	✧ Samba music originated from Brazil
<input type="checkbox"/> I can play a syncopated rhythm.	✧ Samba music is a huge part of Carnival.
<input type="checkbox"/> I can compose a simple break.	✧ Samba Batucada is a type of Samba music.
<input type="checkbox"/> I can perform in time in a group.	✧ Samba is layering syncopated rhythms on different instruments.
	✧ Samba is made up of sections that sound different.

### Features of Samba

Layers of instruments playing different rhythms



### Syncopation



Loud - forte

Crescendo



### Pulse

The steady beat you feel in the music.

### Rhythm

A regular pattern of sound.

### Pitch

How high or low a sound is.

### Tempo

The speed of the music.

### Timbre

The unique sound of different instruments.

### Dynamics

How loud or quiet a sound is.

### Texture

Different layers of music.

### Structure

The way music is organised.

### Notation

Symbols used to represent music played or sung.